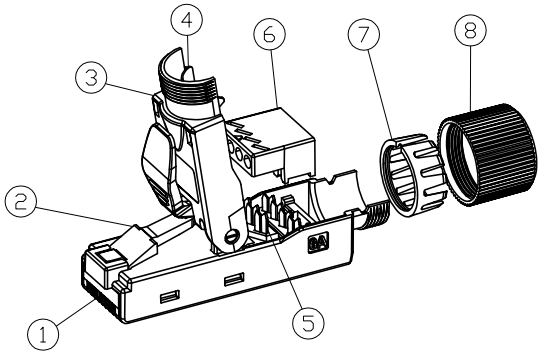
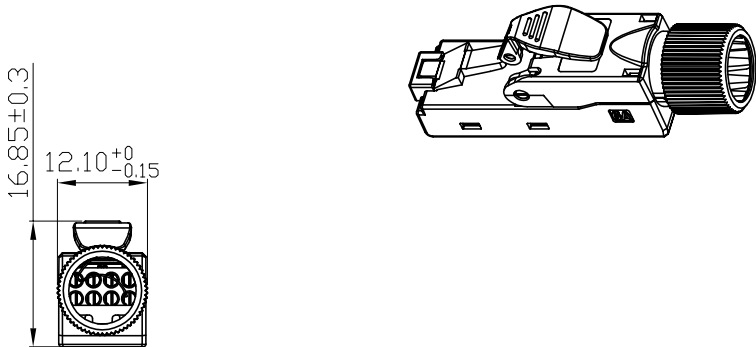
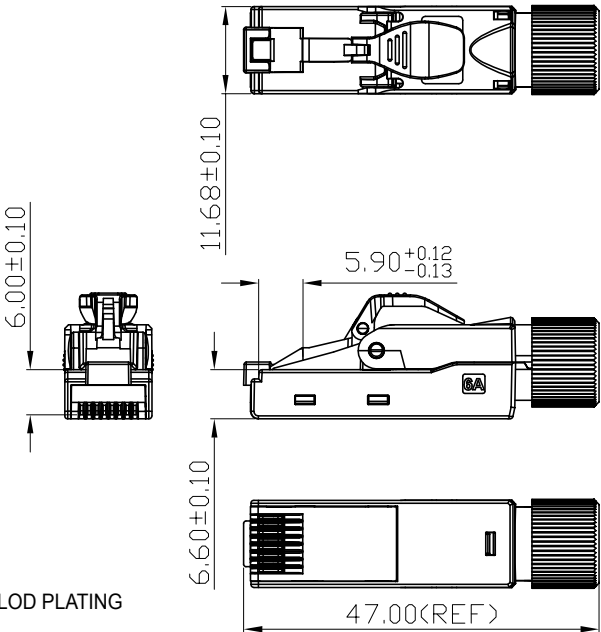


DEGREE CLASS	✓			
LIMITS	A	B	C	D
<10	±0.02	±0.05	±0.10	±0.15
10~50	±0.05	±0.10	±0.15	±0.20
50~120	±0.10	±0.15	±0.20	±0.25
120~300	±0.15	±0.20	±0.25	±0.30
300~500	±0.20	±0.25	±0.30	±0.35
500~1000	±0.25	±0.30	±0.35	±0.40
1000~1500	±0.30	±0.35	±0.40	±0.45
ANGLE	±0.2°	±0.5°	±1.0°	±1.5°

ZONE	REV.	DESCRIPTION	DATE	APPROVED
	A	INITIAL RELEASE	2020.07.13	



MATERIAL

(1) RJ45 PLUG CONTACT:PHOSPHOR BRONZE,50U''' GLOD PLATING

(2) RJ45 PLUG LATCH:POM

(3) RJ45 PLUG HOUSING: ZINC-ALLOY ,NICKEL PLATED

(4) GROUNDING PLATE:SUS304

(5) IDC TERMINALS: PHOSPHOR BRONZE,TIN PLATED

(6) IDC HOUSING COVER: PC FR

(7) C-RING: POM

(8) NUT: FREE CUTTING STEEL,NICKEL PLATED

PHYSICAL CHARACTERISTICS

WIRING LABEL: TIA 568A/B & PNO

TERMINATION CAPABILITY: 22/1~26/1 & 23/7~27/7 AWG

SUPPORTING CABLE DIAMETER: 6~9.0 MM

RE-TERMINATION CAPABILITY: 5 TIMES

CONTACT: PHOSPHOR BRONZE WITH 50U''' GOLD OVER CONTACT AREA

OPERATION TEMPERATURE: -10 ~ 60 °C

ELECTRICAL

CURRENT RATING : 1.5A

DIELECTRIC WITHSTANDING VOLTAGE :

CONTACT/CONTACT:MATED OR TERMINATED CONNECTORS 1000V DC

ALL CONTACTS TO SEREEN:MATED OR TERMINATED CONNECTORS 1500V DC

INSULATION RESISTANCE : 500 MΩ MIN.

CONTACT RESISTANCE : 20 mΩ MAX.

DURABILITY:750 MECHANICAL CYCLES

WIRING PROPERTIES: 27~22 AWG(RESUABLE UP TO 5 TIMES ONLY FOR 27AWG)

SUPPORTING CABLE DIAMETER: 6~9mm



MODEL:	S45-1710S	TITLE:	C6A SHIELDED FIELD TERMINATION PLUG	Simply45®			
DRAWN:		PART NO.		UNIT	MM		
DESIGNED:		MATERIAL		SCALE	1 : 1		
CHECKED:		FINISH		SHEET	1 OF 1		
		TOOLING NO.		SIZE		REV.	A
APPROVED:		DWG NO.					

